

Water Structure:

Unseen Barrier to Biological Efficiency

To truly understand the composition of life and its molecular foundations, we must begin with water, just as nature does. Water is far more than a simple solvent—it serves as the fundamental medium through which all biological processes operate.

The **body's bio-magnetism**, alongside **Earth's magnetic field**, exerts a profound influence on the content, structural organization and mobility of water molecules in our systems, ensuring functional coherence and equilibrium.

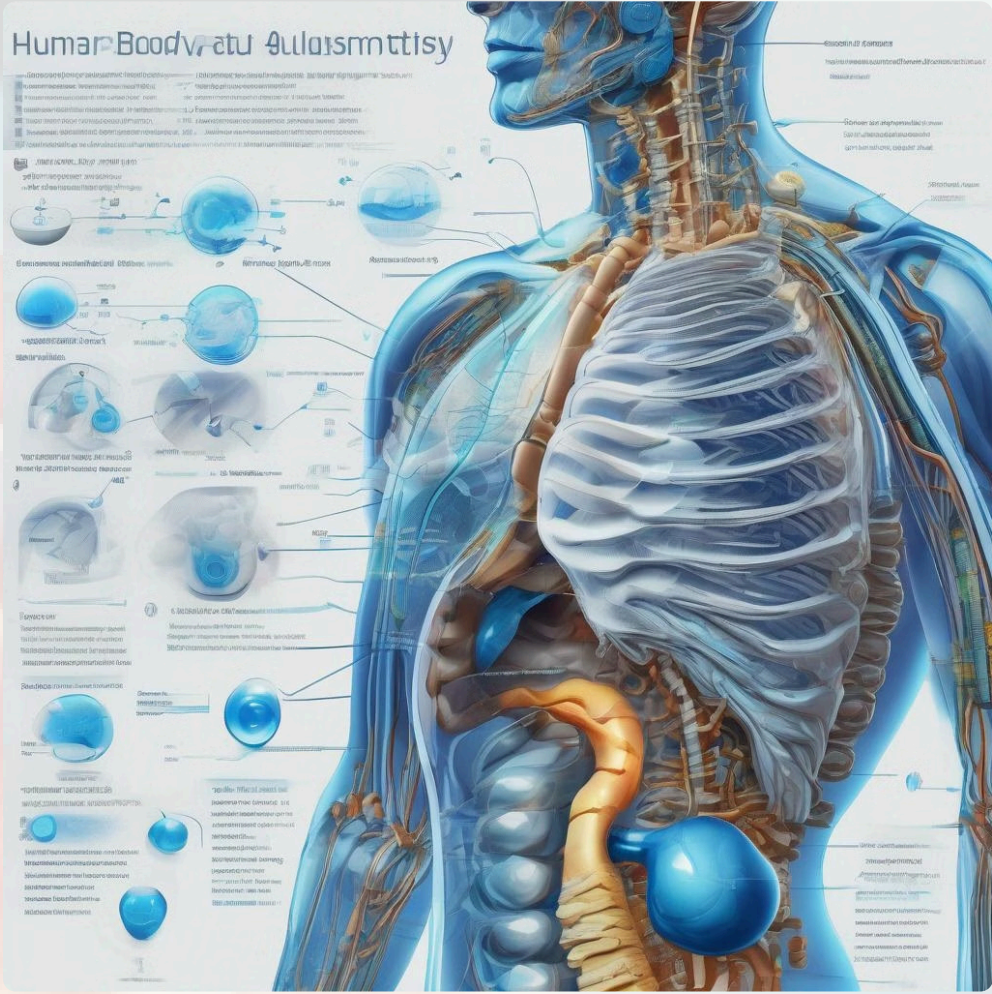
- Every cellular function, from nutrient transport to waste removal, depends on water's unique molecular properties.
- All of the body's chemical processes occur in water. These chemical exchanges must be activated by bio-magnetism
- The greater the magnetism in the body's water, the more effective the **ionic exchange**—vital for maintaining balanced calcium and sodium levels.
- The **sodium/potassium pump**, a critical cellular process, requires magnetic conductivity to function effectively.



Why Intracellular Hydration Matters

The human body is composed of over 70% water on average. Approximately two-thirds of this water resides in the **intracellular space**—inside the cells themselves—while the remaining third is found in the **extracellular space**, which includes the interstitial fluid between cells and the blood plasma.

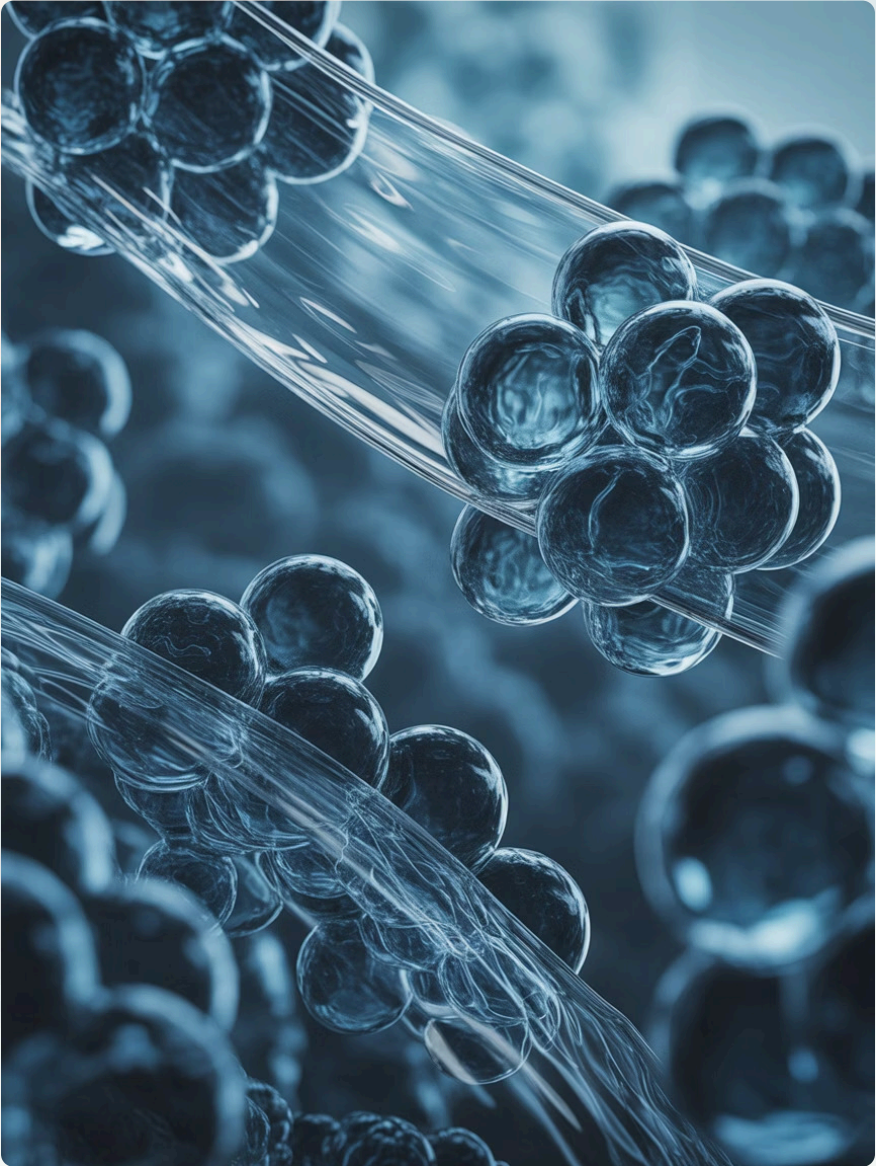
- Foundation of Cellular Life:** Intracellular water is the medium in which DNA, proteins, and enzymes operate. Without proper hydration, these molecules lose their stability and functional precision
- Efficient Biochemical Exchange:** Adequate hydration inside cells ensures optimal ionic balance, nutrient absorption, and waste removal at the molecular level.
- Energy Production:** Cellular hydration supports mitochondrial function, enabling efficient ATP synthesis—the energy currency of life
- Structural Integrity:** Hydrated cells maintain their shape, elasticity, and ability to communicate with neighboring cells, ensuring systemic harmony.



Conventional Water: Baseline State

Despite its essential nature, conventional water, often exists in a relatively disorganized molecular state that limits its biological efficiency. Large water clusters form through weak inter-molecular hydrogen bonding networks, creating a relatively stable but less reactive environment. Key limitations:

- Low Electron Mobility** → restricted charge transfer pathways
- Stable ORP ~+250 mV** → mildly oxidative environmen
- Limited Antioxidant Support** → poor neutralization of reactive oxygen species (ROS)
- Impaired Cellular Hydration** → oversized clusters hinder aquaporin transport
- Sluggish Nutrient Transport** → lower solvation capacity for minerals & biomolecules. Delayed metabolic reactions
- Suboptimal Detoxification** → reduced waste removal, potential accumulation of metabolic byproducts



This baseline state represents the starting point from which **magnetic treatment of water** can dramatically **enhance water's bioactive properties** through **structural reorganization** for *driving efficient cellular exchange and systemic harmony*.

Magnetic treatment transforms ordinary water into a substance characterized by independent water molecules and smaller molecular clusters. This altered physical structure more closely resembles the natural state of biologically active water within cellular environments, making it uniquely suited to optimize cellular hydration and metabolic performance, especially under chronic stress conditions.

Molecular Mechanism of MWT:

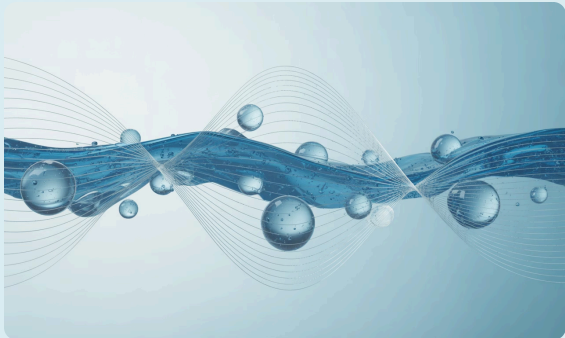
Redefining Bio-hydration Science

Magnetic Water Treatment represents a breakthrough in hydration science—a paradigm shift in how we understand and optimize water for human consumption. It transforms ordinary water into a medium characterized by independent molecules and smaller, more coherent clusters.

This process is not about adding substances or altering chemistry; it is about reorganizing water’s inherent structure to align with biological needs. The result is a uniquely effective form of hydration, optimized for cellular absorption and metabolic performance—even under conditions of chronic stress. In essence, it delivers *intelligent hydration* that works in harmony with the body’s natural systems.

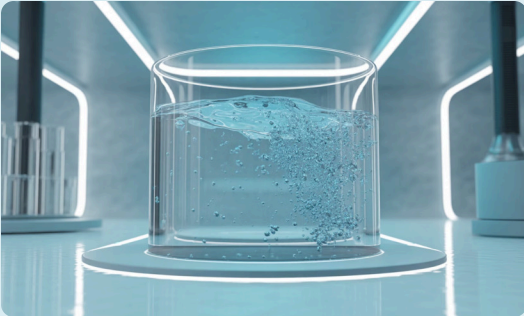
The Process

1. Interaction with Magnetic Field



As water, containing dissolved minerals, ions, and polar molecules, flows through a strong magnetic field, these charged particles begin to interact with the magnetic forces. This initial interaction is key to initiating molecular changes.

2. Lorentz Force Activation



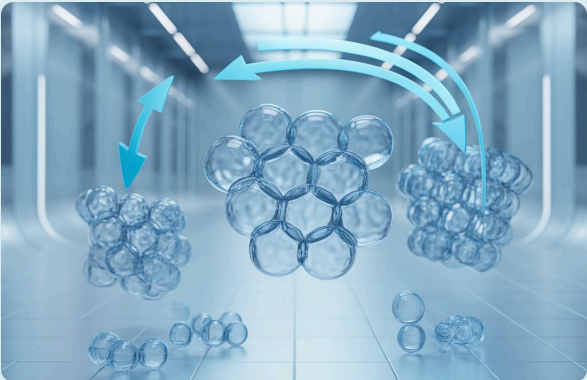
The Lorentz force, a fundamental principle of electromagnetism, acts upon the moving charged particles and polar water molecules. This force causes them to deflect and rotate, altering their normal trajectories and interaction patterns within the water matrix.

3. Molecular Reorganization & Clustering



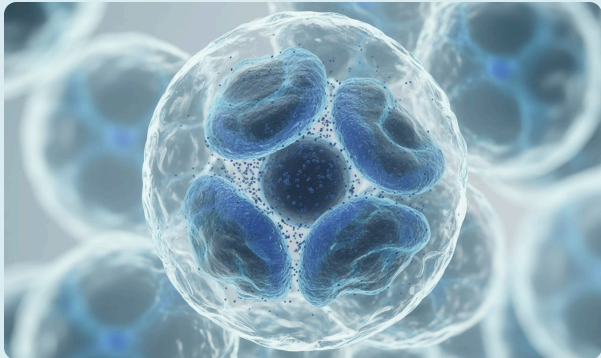
The altered movement of particles leads to a disruption of existing hydrogen bonds and a dynamic reorganization of water molecules. Larger, less stable water clusters are broken down to monomeric molecules and into smaller, more ordered micro-clusters, significantly increasing the water's surface area and solvent capacity.

4. Electron Mobilization



When water is **magnetically structured**, its molecular configuration becomes more ordered and coherent. This reorganization enhances **electron mobility** and facilitates **proton transfer** within the hydrogen-bond network. Consequently, the **oxidation–reduction potential** tends to **decrease**, often shifting from around **+250 mV toward neutral or mildly negative values**.

5. Enhanced Biological Activity



Enhanced Biological Activity

MSW with a lower oxidation-reduction potential (ORP) signifies a more reducing, antioxidant-rich environment—primed to donate electrons and neutralize oxidative species.

This surplus of mobilized electrons empowers vital redox reactions at the cellular level, amplifying antioxidant defenses and optimizing biological performance. As a result, living systems experience a heightened resilience under stress.

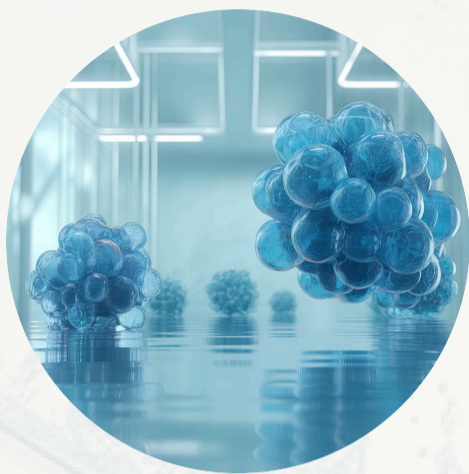
❏ **Like Organizing a toolbox** - The tools are still in the box (water matrix), but they are now arranged in a way that makes them easier to access and use when needed for biological process.

Nourishing the Human Body– From Cells to Motherhood

Through Magnetically Structured Water

The convergence of magnetic water technology and cellular biology defines a promising frontier in integrative health. The science reveals a simple yet profound means to enhance hydration, sustain circulatory performance, and promote vitality at the deepest biological level.

By exposing water to calibrated magnetic fields, we realign its molecular structure into smaller, more coherent clusters with stabilized hydrogen-bond networks and reduced surface tension that is more aligned with cellular requirements to unlock the body's inherent capacity for optimal function.



Conventional Water

Large clusters with high surface tension that inhibit cellular penetration & hydration.



Magnetically Treated Water

Small clusters with reduced surface tension facilitates penetration and hydration.

This restructured, energy-coherent form of water optimizes key physiological functions including **cellular hydration, circulatory efficiency, nutrient and oxygen transport, metabolic activity, redox regulation, and toxin elimination.**

Smaller, Coherent Clusters
Typically 1–4 molecules
Enhanced permeability through **aquaporins**

Improved Electron Mobility
Lower ORP (~-50 to -150 mV)
This baseline state represents the starting point from which magnetic treatment of water can dramatically enhance water's bioactive properties.

Accelerated Nutrient Uptake
Higher solvation efficiency
Improved bioavailability of minerals and vitamins

Enhanced Cellular Hydration
Faster intracellular absorption
Better support for metabolic and enzymatic functions

Efficient Detoxification
Improved lymphatic flow
Enhanced waste clearance and tissue repair

✓ Key Physiological Functions Optimized:



These benefits work synergistically to create an environment where cells function at their biological optimum—translating molecular advantages into tangible improvements. This isn't about adding substances or altering chemistry—it's about reorganizing water's inherent structure to align with biological needs. ***Its intelligent hydration.***

Unlocking DNA's Hidden Order

Through enhanced Cellular Hydration

Modern scientific technology has revealed the critical role of water in maintaining the order of DNA within cells. When DNA is dehydrated, it loses its orderly, repeating structures and adopts more random shapes, losing its normal functional properties.

It is now clear that all information needed to direct molecules into their functional shapes is contained within the molecules themselves, in association with each other and the surrounding water medium. DNA, operating in harmony with water, determines the shapes adopted by molecules as they are produced and move within the cell. *It appears that the molecules themselves are the "code," and water is the medium where this code is expressed.*

How Magnetic Water Treatment Enhances DNA Function & Preserves DNA Order

Magnetic water treatment doesn't just hydrate—it preserves the very architecture of life by stabilizing DNA's order, protecting its integrity, and empowering its molecular code to function at full potential.

Hydration Integrity: Smaller, coherent water clusters effectively penetrate cells, maintaining a stable hydration shell around DNA.

Enhanced Molecular Coding: Improved water structure strengthens the medium for DNA's molecular code, guiding protein and enzyme formation.

Protection Against Oxidative Stress: Increased electron mobility in treated water reduces reactive oxygen species, protecting DNA from damage.

Improved Replication and Repair: Magnetically conductive water supports ionic exchange, fueling efficient DNA replication and repair enzymes



Aquaporins (AQP): Life's Microscopic Water Highways

Their Unique Architecture Facilitates Passage of only Structured Water

💧 Hydration at the Molecular Level

At the foundation of cellular health lies a remarkable gateway system '**Aquaporin Channels (AQP)**', the specialized protein channels embedded in the membranes of every living cell, from the tiniest bacterium to complex human tissue—represent one of biology's most elegant solutions to a fundamental challenge: how to rapidly and selectively transport life's most essential molecule—water.

Imagine billions of water molecules racing through these channels every single second, sustaining hydration at a cellular scale. This is the extraordinary world of aquaporins. From desert plants conserving every precious drop to human kidneys, processing over **180 liters of filtrate daily**, these molecular machines work tirelessly to maintain the delicate water balance that makes life possible.

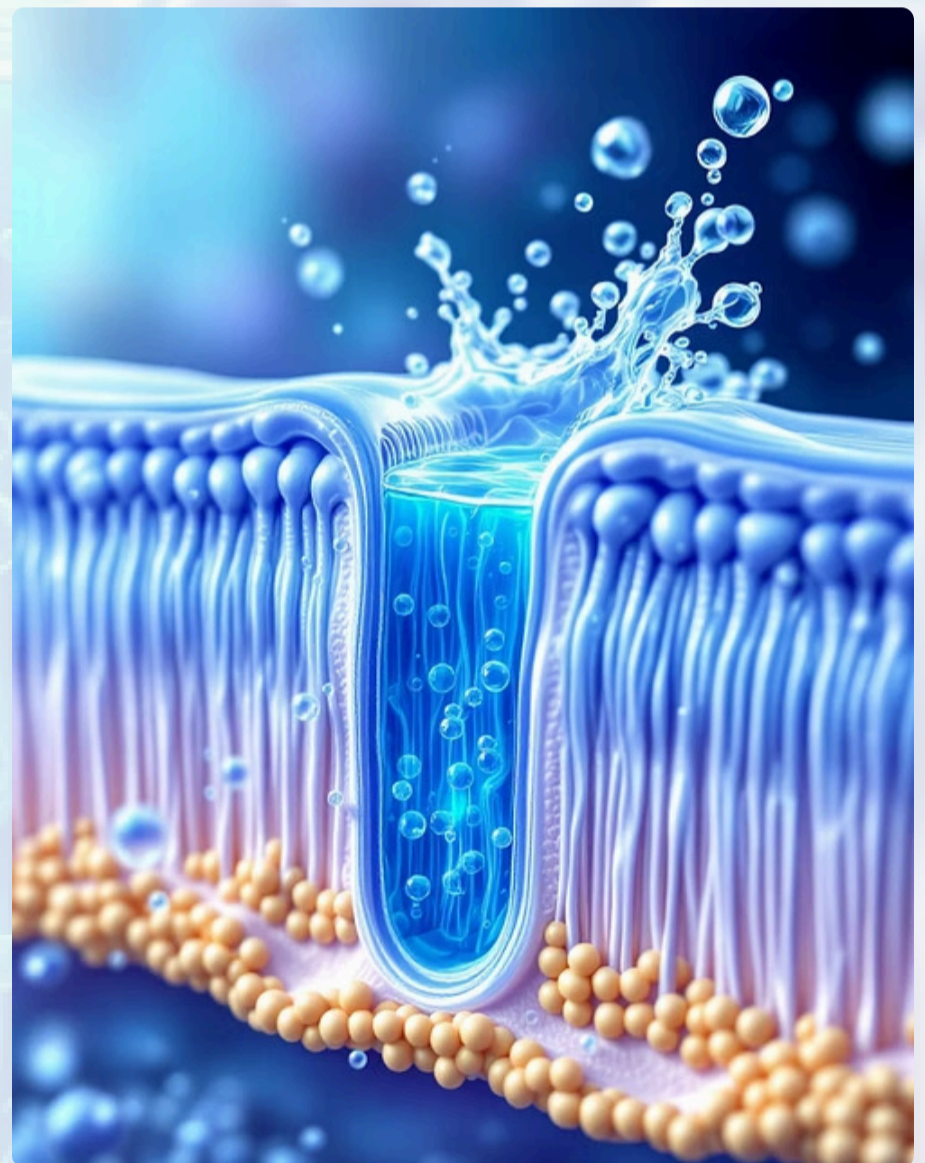
The size and structure of water clusters directly determine how efficiently these channels can transport water into cells. Their Unique Architecture Limits Movement of Normal Water

Each aquaporin channel is only about **2.8 angstroms wide**—approximately **100,000 times thinner than a human hair**.

For instance, **AQP1 in kidney proximal tubules** can reach levels of up to **200,000 channels per square micron**, highlighting their critical role in fluid regulation.

This narrow passage acts as a molecular filter, allowing only **single water molecules** and **small clusters** to pass through, while completely blocking larger clusters, ions, and solutes—regardless of their size.

This selectivity is vital for proper cellular function. Without it, cells would lose essential minerals and nutrients or become flooded with unwanted substances



In untreated normal ground water, reverse osmosis (RO) water, Alkaline water, water molecules exist in large clusters. These bulky formations are often **too large** to navigate aquaporins' microscopic passages, reducing hydration efficiency at the cellular level.

The True Revolution Occurs with Magnetically Structured Water (MSW).

MSW's smaller, coherent clusters pass rapidly through aquaporin channels with minimal resistance—enabling faster hydration, improved intracellular fluid balance, and enhanced biological performance.



High Oxidative–Reduction Potential

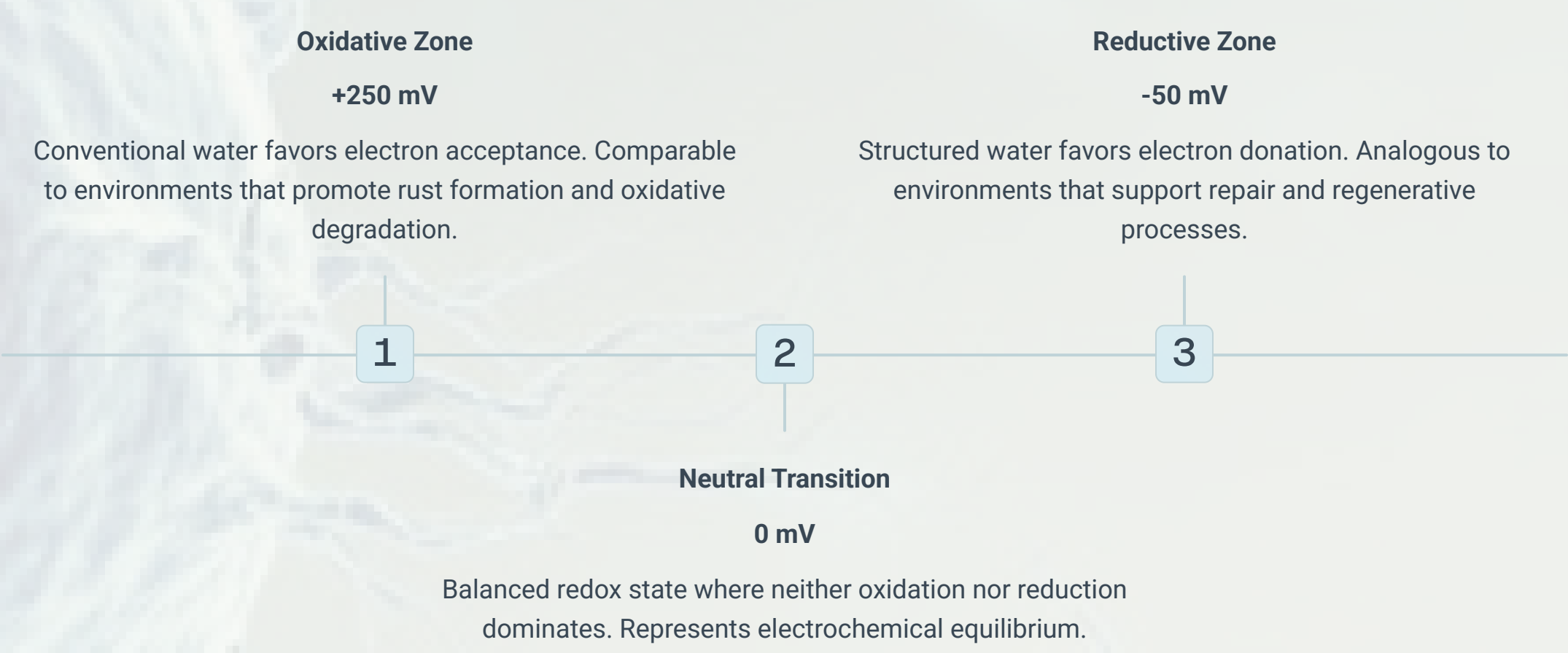
Magnetically Treated Water–Structured to Defend

Your immune system operates as a sophisticated defense network, constantly surveilling for pathogens, damaged cells, and inflammatory triggers. The vitality of this system depends profoundly on **cellular hydration** and the **oxidative-reduction potential (ORP)** of your body's fluids.

ORP measures a fluid's tendency to donate or accept electrons—essentially its antioxidant or oxidizing character. Conventional water typically has a **positive ORP (+200 to +400 mV)**, meaning it accepts electrons and contributes to oxidative stress.

Following magnetic treatment, water's oxidation–reduction potential values progressively **decrease from +200–300 mV** toward **neutral (0 mV) or mildly negative values**. This shift reflects a transition from a mildly oxidative environment to a more reducing, antioxidant state—one capable of donating electrons for neutralizing free radicals and support cellular defense mechanisms.

	Antioxidant and Cellular Defense Mechanism The enhanced electron availability enables magnetically structured water to neutralize reactive oxygen species (ROS) directly, thereby lowering oxidative stress at the cellular level. This transformation turns water from a passive solvent into an active participant in maintaining physiological stability and supporting natural antioxidant systems.
	Microbial and Metabolic Benefits The improved redox balance also creates favorable conditions for beneficial microbial activity—important in gut health, fermentation processes, and bio-industrial applications. A stable, reduced environment supports enzymatic reactions and metabolic efficiency across biological systems.



Negative ORP Power

With values between –50 to –150 mV, MSW functions as a natural antioxidant, continuously donating electrons to neutralize reactive oxygen species

Immune Cell Energization

Macrophages, T-cells, and natural killer cells operate more efficiently in antioxidant-rich environments, improving pathogen recognition and elimination

Inflammation Reduction

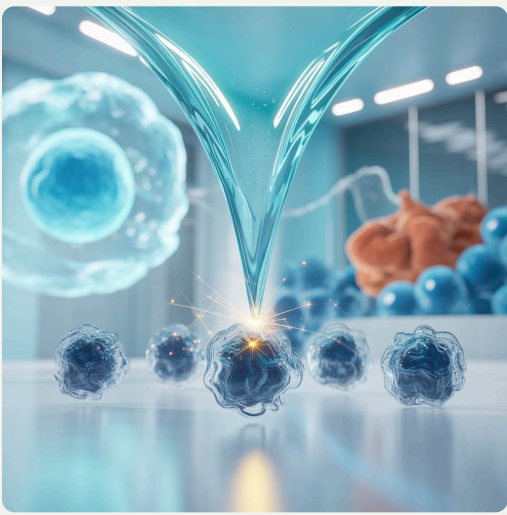
Lower oxidative stress reduces pro-inflammatory cytokine production, supporting balanced immune responses without hyperactivity

Cellular Resilience

Protected from oxidative damage, cells maintain integrity, function optimally, and resist age-related decline more effectively

Enhanced Immunity & Regeneration with Structured Water

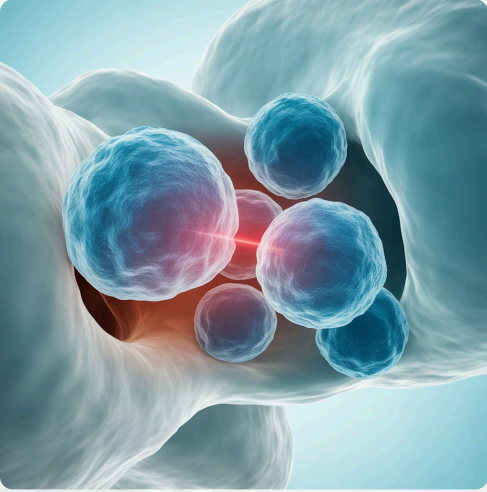
The Antioxidant Cascade



When Magnetically Structured Water (MSW) delivers electrons, it initiates a protective cascade. These electrons actively neutralize free radicals—unstable molecules that damage DNA and proteins—before they can harm healthy tissues.

This process protects cells and significantly enhances their metabolic efficiency.

Accelerated Regeneration

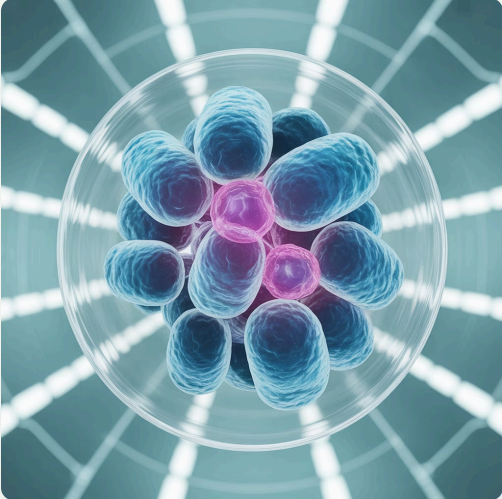


Beyond defense, the benefits of negative ORP water promote regeneration.

Reduced oxidative stress accelerates wound healing, supports tissue repair, and slows cellular aging.

This regenerative potential is crucial during physical stress, illness recovery, and aging.


Energizing Immune Cells



Mitochondria, the powerhouses of immune cells, thrive in electron-rich environments.


By providing abundant electrons, structured water boosts ATP production, supplying immune cells with the vital energy required to mount effective responses against infections and abnormal cells.

The Human Benefit



By reducing oxidative load and enhancing cellular resilience, MSW supports the body's natural repair, regeneration, and detoxification pathways.

Users often experience improved vitality, clearer skin, and reduced markers of inflammation. Over time, the sustained redox balance contributes to slower cellular aging and improved overall physiological performance.



Optimized Recovery & Performance

Individuals often report faster post-exercise recovery and reduced muscle soreness.

By neutralizing oxidative demands, MSW helps the body's natural antioxidant systems maintain balance, making it particularly valuable for athletes and those focused on quick recuperation

The Integration of Science and Wellness: Whether you're supporting a pregnancy, managing stress, seeking better recovery, or simply pursuing optimal health, the structure of your water matters. By choosing magnetically treated water, you're making a choice that resonates through every cell, every system, and every moment of your body's remarkable capacity to heal, adapt, and thrive.

Cardiovascular and Lymphatic systems

Flow Restored, Toxins Removed

Our cardiovascular and lymphatic systems form an intricate highway network, continuously transporting nutrients, oxygen, and waste products throughout your body. The efficiency of this transportation depends heavily on blood viscosity—how easily blood flows through vessels—and lymphatic drainage, which removes cellular waste and toxins. Magnetically structured water optimizes both systems simultaneously.

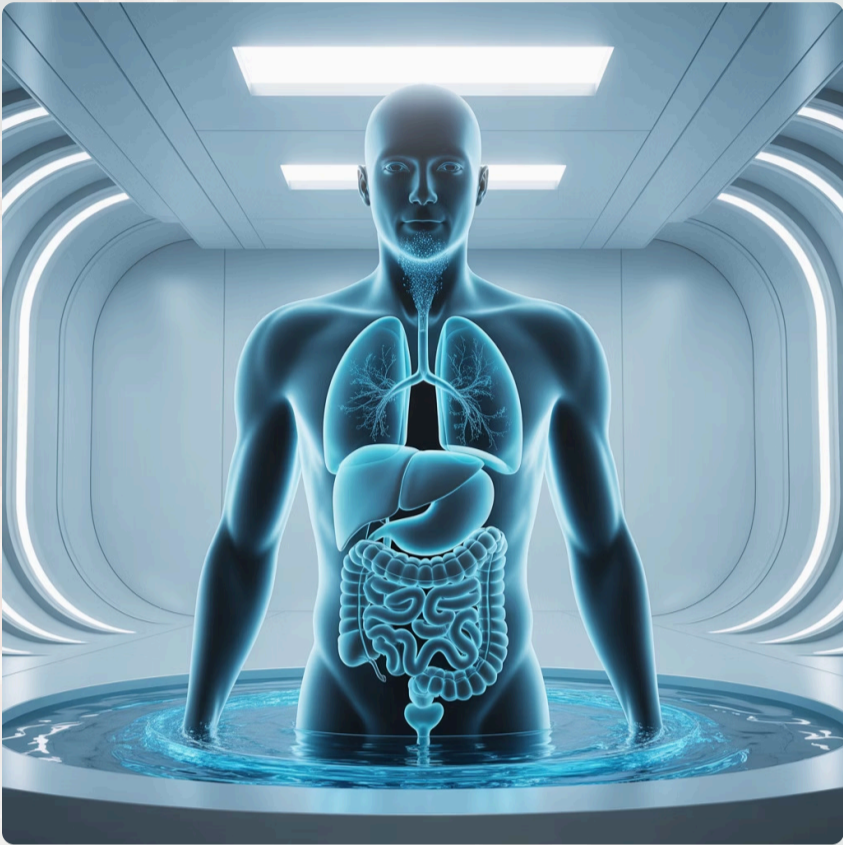
The Detoxification Advantage


Your lymphatic system moves up to three liters of fluid daily, but unlike blood circulation driven by your heart, lymph flow depends on muscle movement and proper hydration. Metabolic waste products, environmental toxins, and cellular debris accumulate when lymphatic drainage slows. Magnetically structured water smaller molecular clusters facilitate faster fluid movement through lymph nodes, where immune cells filter and neutralize harmful substances.

MSW's smaller molecular clusters facilitate faster fluid movement through lymph nodes, where immune cells filter and neutralize harmful substances.

Both kidneys and liver—your body's primary detoxification organs—function more efficiently when supported by optimally structured water for waste filtration and elimination.

Improved blood rheology accelerates the transport of metabolic by-products from tissues to elimination organs, reducing toxic burden at the cellular level.



 **The Human Benefit**

- Experience noticeably higher energy levels throughout the day as your cells produce ATP more efficiently.
- Digestive function improves as enzymatic processes operate optimally.
- Blood glucose regulation becomes more stable, reducing energy crashes and cravings.

❤️ Cardiovascular Optimization

Magnetically structured water fundamentally improves blood rheology—the science of how blood flows through your vascular system. Blood viscosity affects everything from blood pressure to organ perfusion. When water molecules are properly structured, they integrate more effectively into plasma, reducing friction and improving microcirculatory flow.

This enhanced circulation means oxygen and nutrients reach even the smallest capillary beds, supporting tissue health at the most fundamental level.

Reduced Surface Tension

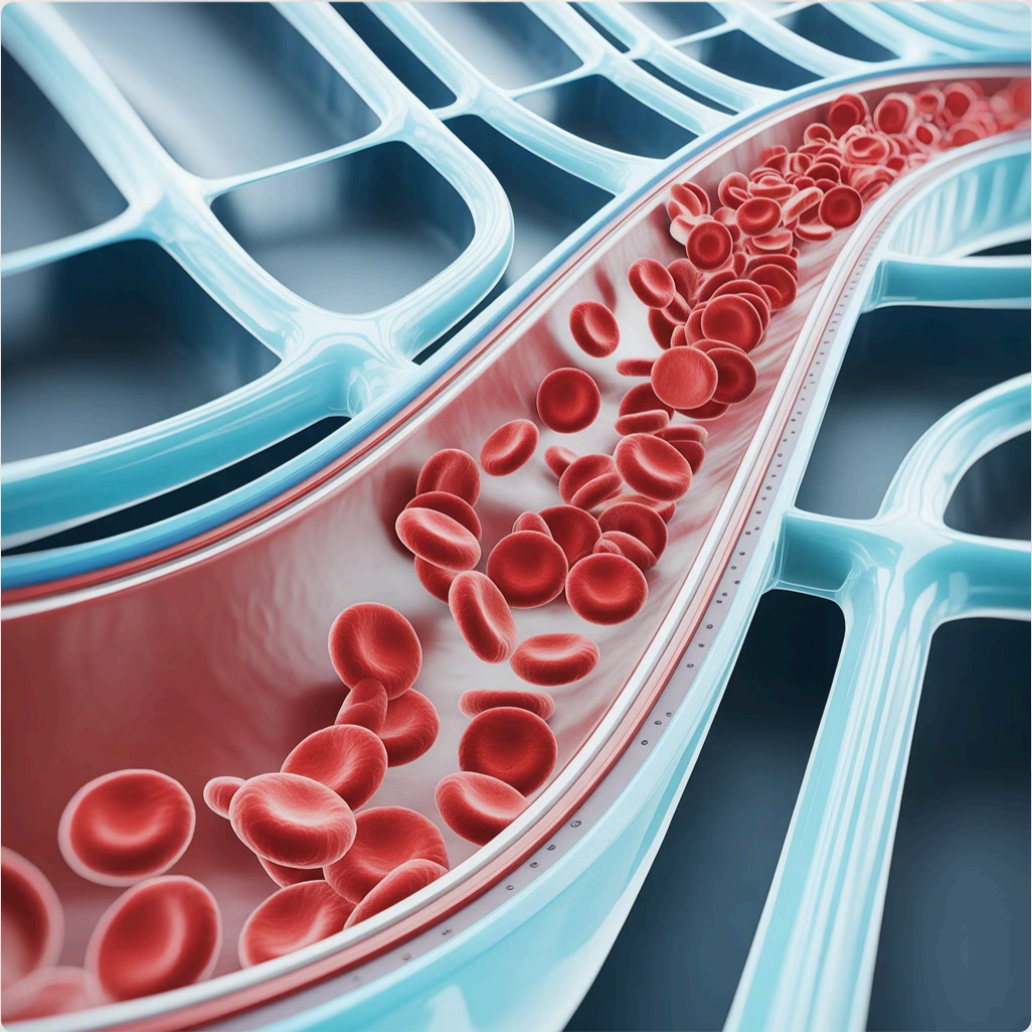
Lower surface tension translates to reduced blood viscosity, allowing blood to flow more freely through even the smallest capillaries.


Prevented Cell Aggregation

MSW reduces red blood cell clumping (rouleaux formation), maintaining optimal cell separation for efficient oxygen exchange.

Enhanced Tissue Oxygenation

Better blood flow means superior oxygen delivery to tissues and organs throughout the body, supporting peak cellular function.



 **The Human Benefit**

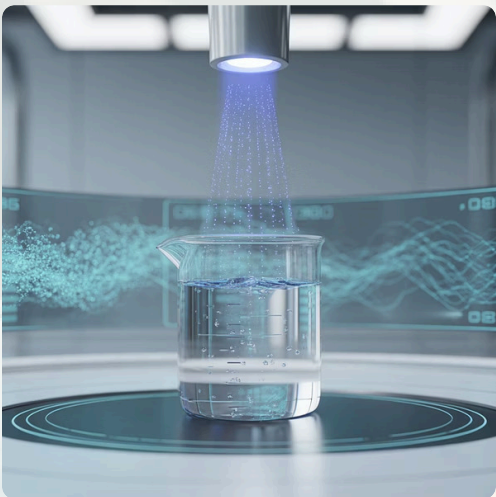
Improved cardiovascular efficiency translates to measurable increases in stamina and endurance. Athletes report enhanced performance, while everyday activities feel less taxing as your circulatory system operates at optimal capacity.

Calmer Mind

Neurological Enhancement Through MSW

Hydration’s impact on mental health extends far beyond quenching thirst. **Magnetically Structured Water (MSW)** supports neurochemical balance through enhanced electron mobility and antioxidant potential. Properly organized water molecules become powerful allies against oxidative stress—the hidden driver of mental fatigue, anxiety, and cognitive decline.

The nervous system relies on precise ion exchange and rapid electrical signaling across cellular membranes. Magnetically structured water optimizes these electrochemical processes by improving ion mobility and stabilizing membrane potentials. This enhanced cellular efficiency supports clearer signal transmission throughout the nervous system, contributing to improved cognitive clarity, emotional balance, and more consistent neural performance, from basic reflexes to higher-level thinking



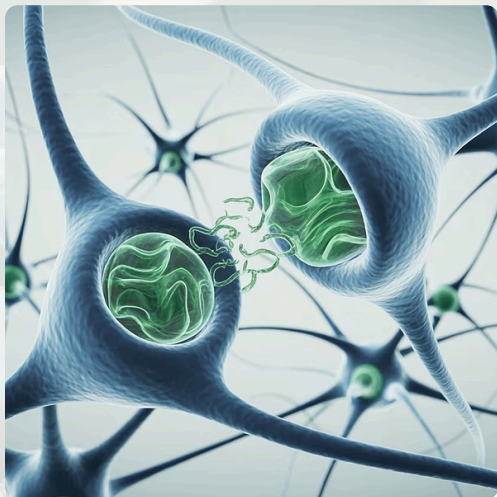
Electron Mobility & Antioxidant Potential

Magnetic treatment increases water's ability to donate electrons, creating natural antioxidant properties that protect neural tissue from damage.



Combating Oxidative Stress

Reactive oxygen species (ROS) accumulate in brain tissue during stress, disrupting neurotransmitter production. MSW's enhanced electron-donating capacity helps neutralize these harmful molecules.



Neurotransmitter Protection

Neutralizing free radicals in brain synapses reduces oxidative damage to crucial neurotransmitter pathways, ensuring smoother neural communication and a more stable neurochemical environment.



Cortisol Modulation & Stress Reduction

Reduced oxidative stress supports balanced stress hormone production, promoting emotional equilibrium and enhancing overall mental resilience.



Enhanced Mental Clarity

Improved neurochemical balance enhances focus, reduces brain fog, and supports cognitive performance, leading to tangible improvements in mental clarity and emotional well-being.



The Neuroscience of Structured Hydration






Brain tissue is particularly vulnerable to oxidative stress due to its high metabolic rate and lipid-rich composition. Structured water's antioxidant properties help maintain the delicate balance required for optimal neurotransmitter function.

Studies suggest that improved hydration quality can reduce fatigue markers by up to 30% and support better stress resilience during demanding cognitive tasks. This isn't just about drinking more water—it's about drinking better water that actively supports your neurological health.

💖 Revitalizing Intimacy:

Structured Water for Sexual Health

Sexual health is a cornerstone of overall well-being, deeply intertwined with physiological processes from circulation to hormonal regulation. Magnetically structured water (MSW) offers a holistic approach to enhancing sexual function by optimizing these fundamental bodily systems, promoting vitality and responsiveness for both men and women.

	Enhanced Blood Flow MSW improves microcirculation, ensuring robust blood flow to reproductive organs vital for arousal and function.
	Nitric Oxide Boost Optimized hydration supports the body's natural production of nitric oxide, a key vasodilator crucial for erectile function and clitoral engorgement.
	Hormonal Equilibrium By reducing systemic oxidative stress and supporting cellular function, MSW contributes to a more balanced endocrine system, influencing sex hormone production and regulation.
	Cellular Protection Its antioxidant properties shield delicate reproductive tissues and nerves from oxidative damage, preserving their sensitivity and function over time.
	Increased Stamina Improved cellular energy production (ATP) translates to greater physical stamina and reduced fatigue, enhancing sexual performance and enjoyment.
	Nerve Sensitivity Better nerve signal transmission and cellular hydration enhance nerve sensitivity, crucial for heightened pleasure and response.

Comprehensive Benefits for Men and Women

For men, MSW can aid in supporting robust erectile function, improving sperm motility, and increasing libido. The enhanced circulation and nitric oxide availability contribute directly to firmer erections and greater sexual confidence. For women, benefits include heightened clitoral sensitivity, increased natural lubrication, and a stronger libido.

Ultimately, by fostering optimal physiological conditions, magnetically structured water supports a more vibrant and fulfilling sexual life, impacting overall intimacy and personal well-being.



From Mother to Miracle 🧒

Hydration that Adapts to Every Stage of Life

Pregnancy represents one of nature's most profound transformations, demanding extraordinary nutritional and hydration support. During gestation, a mother's body must not only sustain her own cellular functions but also provide every building block for a developing life.

The placenta functions as the ultimate nutrient gateway, relying on optimal hydration for efficient transport of oxygen, vitamins, minerals, and amino acids. Magnetically structured water emerges as a powerful ally in this sacred journey, enhancing the bioavailability of nutrients and supporting the intricate dance of placental exchange.

MSW's smaller molecular clusters enhance solvation—the process by which nutrients dissolve and become accessible for cellular uptake. This improved solubility means that vital pregnancy nutrients like folate, iron, and calcium can be delivered more effectively to developing fetal tissues.



Enhanced Placental Function

Improved water structure supports optimal blood flow and nutrient transfer across placental membranes, ensuring fetal tissues receive consistent nourishment



Fetal Hydration & Growth

Smaller water clusters penetrate amniotic fluid more efficiently, supporting cellular development and healthy tissue formation throughout pregnancy



Maternal Vitality & Resilience

Better hydration reduces pregnancy fatigue, supports cardiovascular adaptation, and helps maintain energy levels during the demanding months of gestation

The Molecular Foundation of Maternal Health

Pregnancy increases a woman's blood volume by up to 50%, placing extraordinary demands on hydration systems. Beyond simple fluid intake, the structure of that water determines how effectively it can support expanded circulation, kidney function, and cellular repair.

MSW's enhanced solvation properties mean that essential minerals remain in solution rather than precipitating out, reducing the risk of kidney stones while ensuring optimal mineral bioavailability.

This structured approach to hydration supports every aspect of maternal physiology, from reducing morning sickness to maintaining healthy blood pressure throughout all three trimesters.



"The quality of hydration during pregnancy may be as important as the quantity. Structured water supports not just fluid volume, but the very mechanism by which life-giving nutrients reach the developing child."

Optimum Hydration

During Vulnerable Life Stages

The benefits of magnetically structured water extend across all demographics, with particularly significant impacts during vulnerable life stages when optimal hydration is most critical.

1

Infants & Children

Rapidly growing bodies require optimal hydration for cell division and tissue development. MSW supports accelerated growth phases while enhancing nutrient assimilation.

- Superior cellular hydration during growth spurts
- Enhanced nutrient absorption for development
- Improved digestive comfort and function
- Better immune system maturation

2

Elderly Adults

Age-related decline in cellular hydration capacity can be partially offset by MSW's enhanced absorption properties. Reduced oxidative stress supports healthy aging.

- Restored cellular hydration efficiency
- Reduced age-related oxidative damage
- Improved joint mobility and flexibility
- Enhanced cognitive function and clarity

3

Recovery & Illness

During periods of physical stress or illness, the body's need for optimal hydration increases dramatically. MSW supports accelerated recovery processes.

- Faster recovery from physical stress
- Enhanced pH balance during illness
- Improved metabolic function
- Superior detoxification support



Healthy Skin

it's a new paradigm in how Magnetically Structured Water interacts

The future of skincare is here. A new frontier in skin health is unfolding—where advanced physics meets the wisdom of biology. Magnetic water technology doesn’t merely moisturize; it redefines hydration at the cellular level, working in harmony with your body’s natural rhythms. This revolutionary approach marks the beginning of a deeper transformation—one that invites science to serve healing, and innovation to honor life. Magnetic water technology offers a new pathway to skin health that works with your body’s natural processes, not against them.

Dry skin isn't just missing moisture—it's missing flow

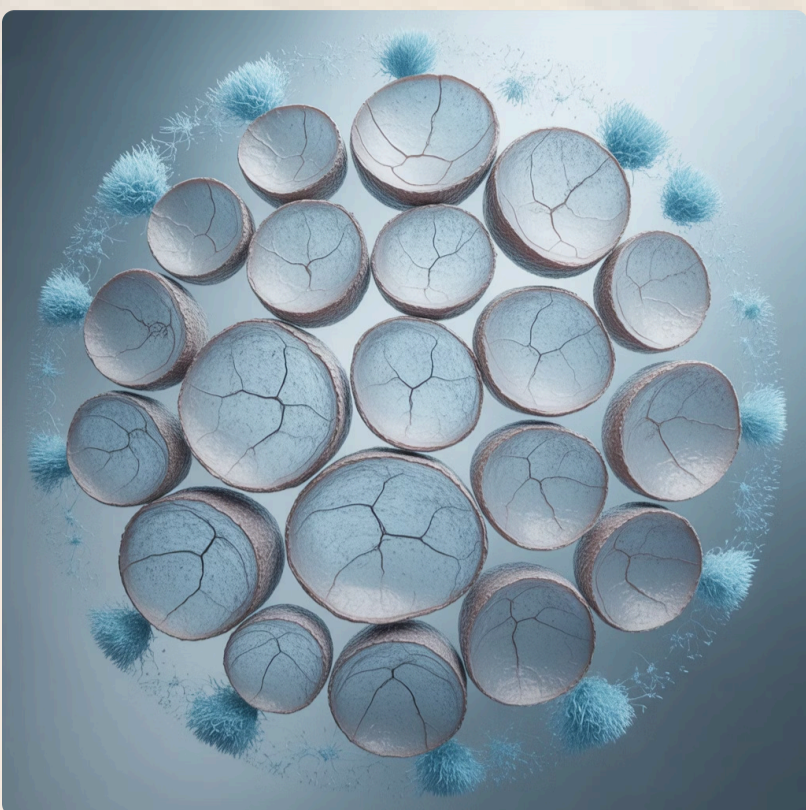
Traditional skincare approaches focus on adding water to the skin's surface, but the real issue lies deeper. When skin becomes damaged or dehydrated, the microscopic channels responsible for water transport—called **aquaporin-3 (AQP3) channels**—become sluggish and inefficient.

These specialized protein channels facilitating the transport of water and glycerol into skin cells, require the right conditions to function optimally.

In Standard Water, random molecular alignment limits cellular penetration and uptake efficiency. This cellular dysfunction creates a cascade of problems:

- impaired barrier function,
- slower healing,
- and persistent dryness that surface treatments can't address.

The skin's natural hydration highway becomes congested, leaving cells starved for the water and nutrients they desperately need.



Impaired Water Transport

AQP3 channels become less efficient, reducing cellular hydration capacity

Compromised Barrier Function

Skin loses its protective abilities, becoming vulnerable to environmental damage

Delayed Healing Response

Recovery processes slow down without adequate cellular hydration support

AQP3 Channel Activation Through Magnetically Treated Water:

The Key to Deep Hydration



Magnetically treated water represents a breakthrough in skincare science. When exposed to a carefully calibrated magnetic field, water undergoes structural reorganization—producing a higher proportion of single molecules and smaller clusters that are high in bioavailability.

This optimized molecular structure improves channel recognition and facilitates more efficient movement through AQP3 channels, leading to measurably better hydration outcomes.

Importantly, magnetic treatment doesn’t add anything to the water—it simply refines its natural structure for superior biological compatibility.

01

Topical Application

Magnetically treated water makes contact with the skin surface

02

Channel Recognition

AQP3 proteins detect and respond to the enhanced water structure

03

Enhanced Transport

Improved water and glycerol uptake through activated channels

04

Cellular Hydration

Deep, lasting hydration at the cellular levelImprovements

Healing in Action: Visible Results



Barrier Repair

Tight junctions between skin cells strengthen and reform, creating a more effective protective barrier against environmental stressors and moisture loss.

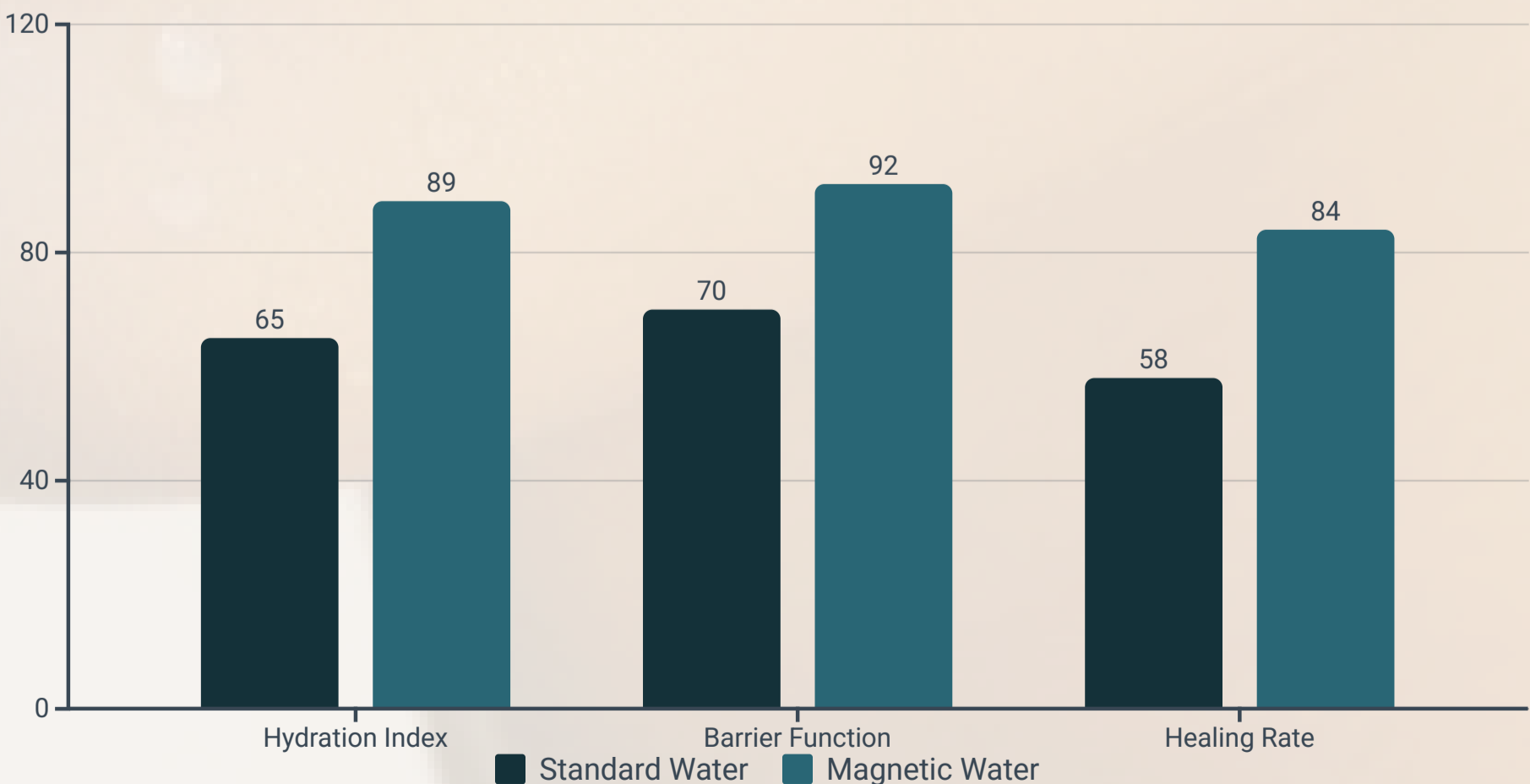
Accelerated Healing

Enhanced cellular hydration supports faster tissue repair processes, reducing recovery time for minor skin damage and irritation.

Improved Texture

Deep hydration leads to visibly smoother, more supple skin with improved elasticity and a natural, healthy glow.

Healing in Action: *Measurable Improvements*



This revolutionary approach represents just the beginning of what's possible when we apply advanced physics to biological systems. Magnetic water technology offers a new pathway to skin health that works with your body's natural processes, not against them.

Join the growing community of consumers who are experiencing the transformative power of magnetically enhanced hydration. The science is clear, the results are measurable, and the future of skincare has never looked brighter.

Magnetically Structured Water

Revolutionizing Hydration and Oxygen Dynamics

in Red Blood Cells

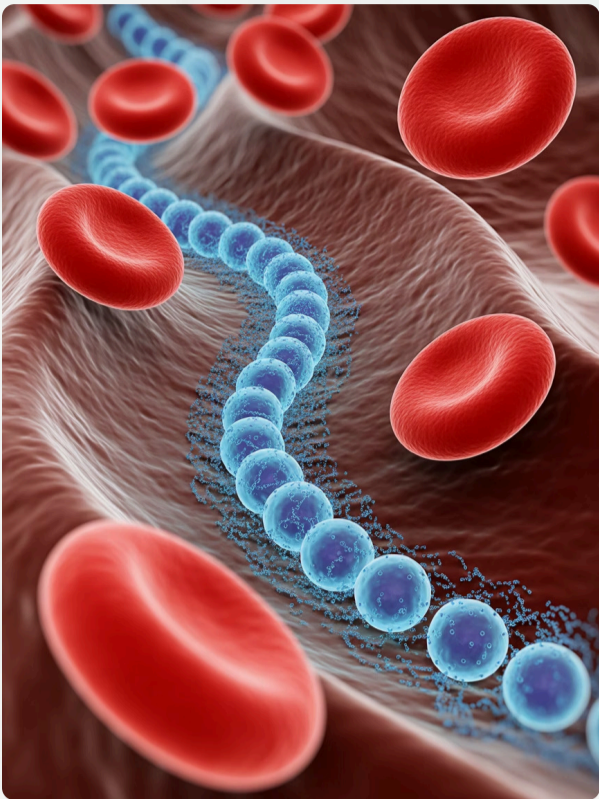
Shaped for Vitality: Maximizing Gas Exchange and Capillary Passage

Red blood cells (RBCs) are the body's vital oxygen carriers, delivering life-sustaining oxygen to every tissue and organ. Their efficiency depends not only on nutrient balance and hemoglobin integrity, but also on the structure of water and their characteristic shape that sustains their function. Since water constitutes about 70% of **RBC** content, hydration quality becomes a fundamental determinant of cellular performance.

Aquaporin-1: The Molecular Gateway for Structured Hydration

Aquaporin-1 (AQP1) is the **major water channel protein** in human red blood cells (RBCs). Functionally, these channels enable **extremely rapid and selective water transport**, allowing RBCs to equilibrate osmotic gradients in milliseconds — crucial as they pass through tissues and capillaries with varying osmotic conditions.

- These channels are just **2.8 angstroms wide**, permitting only **single-file chains of water molecules** while excluding ions and larger solutes—a critical function for maintaining cellular homeostasis.
- Each RBC contains **roughly 200,000 AQP1 tetramers** and each AQP1 tetramer forms four functional water pores, totaling approximately **800,000 individual water channels per RBC**.



Extreme Deformability

Properly hydrated RBCs traverse capillaries as narrow as 3-4 micrometers—less than half their resting 7-8 micrometer diameter

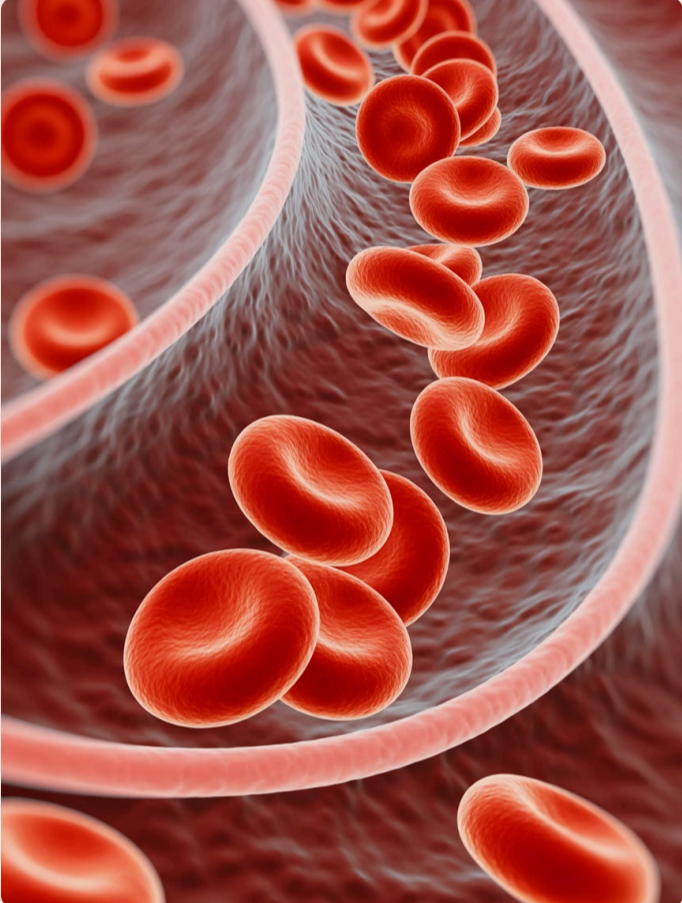
Shaped for Vitality: Maximizing Gas Exchange and Capillary Passage

The characteristic **biconcave disc shape** of healthy erythrocytes —featuring a dimpled center and thickened rim—represents an evolutionary optimization for gas exchange efficiency.

This distinctive morphology provides nearly **40% greater surface area** compared to a sphere of equivalent volume, maximizing the interface available for oxygen and carbon dioxide diffusion.

Enhanced Surface-to-Volume Ratio

Biconcave geometry provides 140 μm² surface area versus 100 μm² for spherical cells of equal volume



Discover how **magnetically structured water transforms cellular hydration at the molecular level**, creating conditions for **optimal red blood cell function and systemic vitality**.

Magnetically Structured Water: A Molecular Match

Exposure to calibrated magnetic fields enables water molecules to reorganize into smaller, more coherent clusters. These clusters exhibit improved compatibility with **Aquaporin-1's** electrostatic environment and narrow selectivity filter, promoting smoother transmembrane flow.

Magnetically structured water enhances intracellular hydration by supporting optimal **phospholipid bilayer hydration**, maintaining membrane elasticity, and preserving the **ionic conditions** required for stable **spectrin-actin-protein 4.1 cytoskeletal assembly**.

The outcome is *improved red blood cell (RBC) deformability*—a key biophysical property that allows **erythrocytes** to traverse the microvasculature and sustain oxygen delivery to high-demand tissues such as **cardiac muscle, brain parenchyma, and skeletal muscle** during exertion.

Optimizing Red Blood Cell Function

By matching the hydration requirements of AQP1 channels, magnetically structured water enhances intracellular hydration, maintaining the **ideal biconcave shape** of RBCs—characterized by a central dimple and roughly **40% greater surface area** than a sphere of equal volume (~90 fL or 90 μm³). This distinctive geometry maximizes the surface area-to-volume ratio, which is essential for efficient gas exchange and oxygen transport.

The result is a **cellular environment primed for maximum respiratory efficiency**—transforming every breath into more effective tissue oxygenation. This structural compatibility enhances:

Selectivity Filter Transit

Smooth, single-file passage of structured molecules through the aromatic/arginine constriction

Membrane Elasticity Maintenance

Improves intracellular hydration, preserving spectrin-actin cytoskeletal networks and membrane lipid fluidity

Reduced Surface Tension

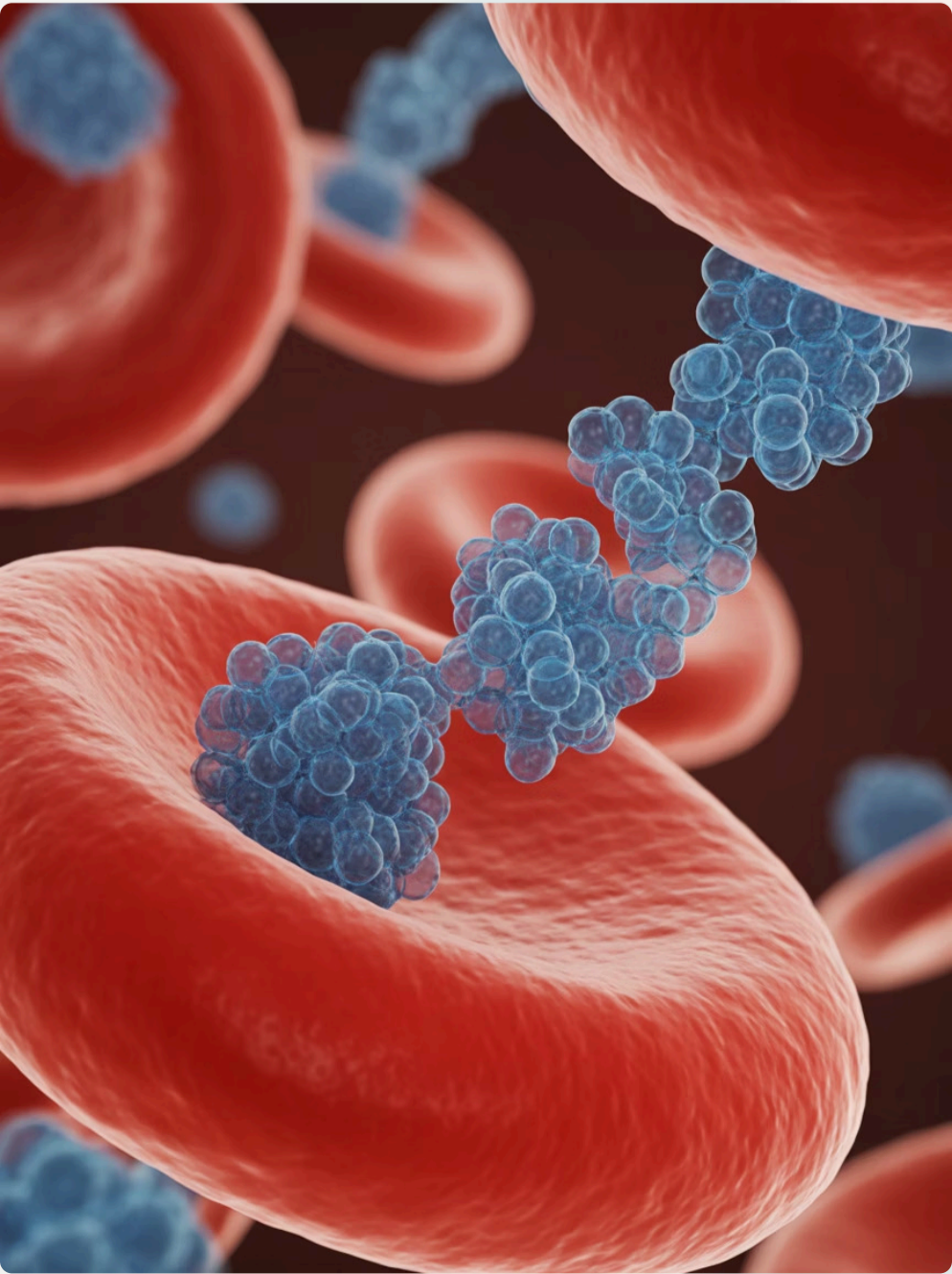
Lower interfacial energy enables enhanced membrane permeability and cellular uptake.

Intracellular Distribution

Faster cytoplasmic hydration and improved osmotic regulation

Enhanced Solvent Capacity

Improved charge distribution accelerates nutrient transport and metabolic efficiency



Studies suggest this alignment can **increase cellular water turnover by 15–25%**, supporting more efficient hydration dynamics at the molecular level.

Improved Blood Fluidity and Microcirculatory Perfusion

Rheological Optimization Through Enhanced Hydration

Blood rheology—the study of flow properties—critically determines tissue perfusion efficiency and cardiovascular workload. Whole blood viscosity depends on multiple factors: Hematocrit, Plasma composition, Temperature, and critically, **red blood cell deformability and aggregation tendencies**.

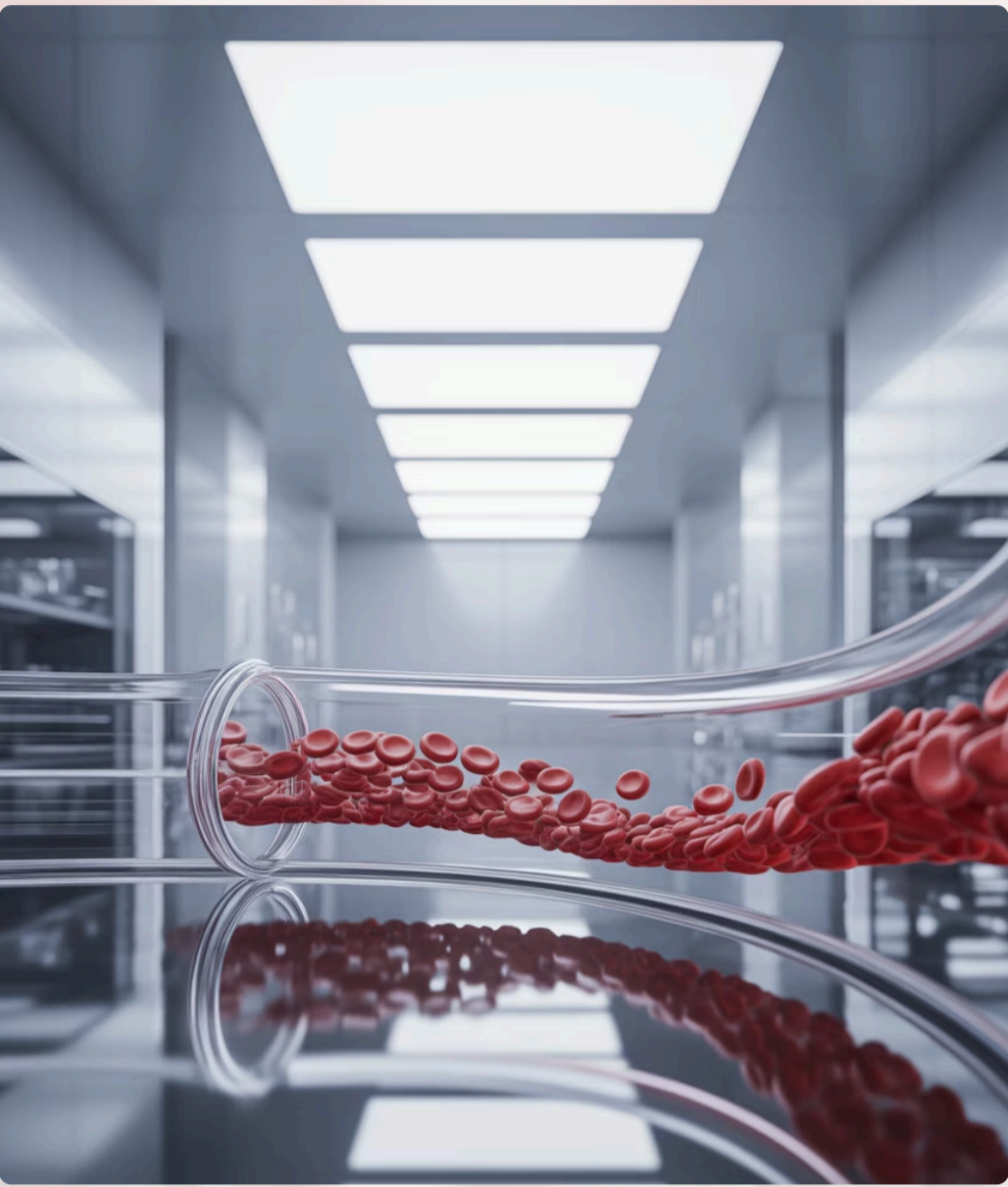
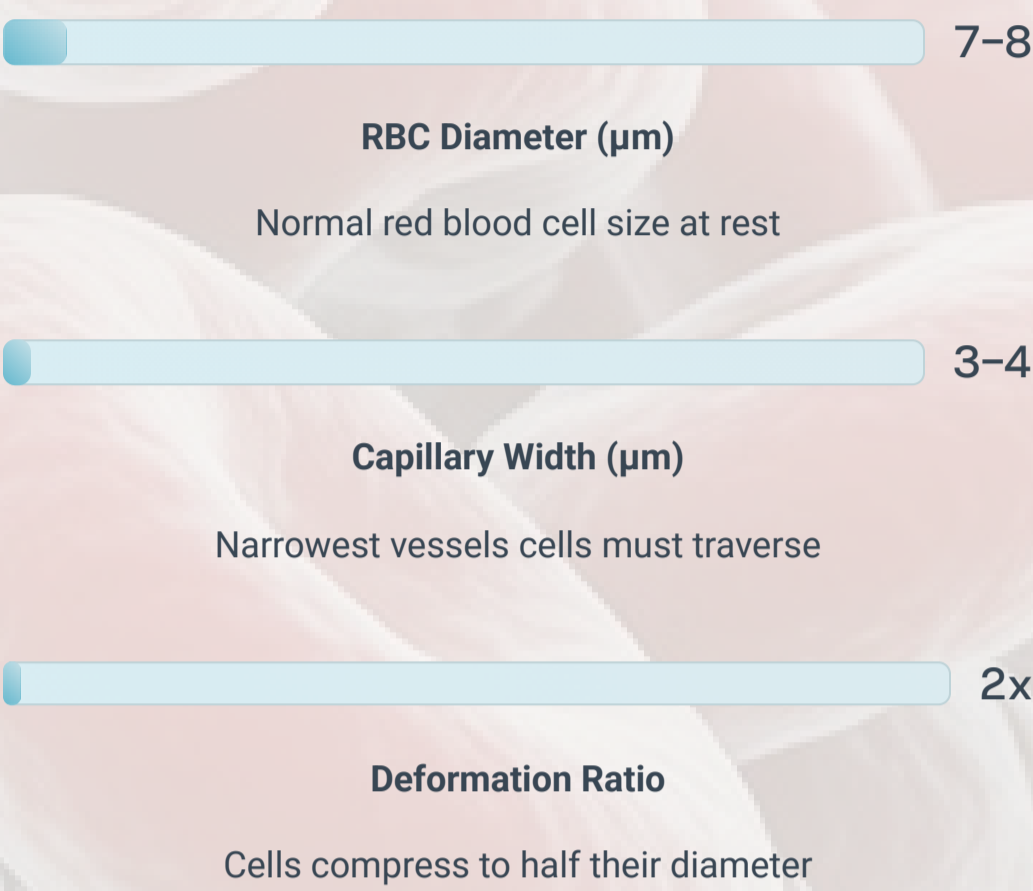
Magnetic Water Driving Microvascular Efficiency

Magnetically structured water by improving individual red cell hydration status, reduces cellular rigidity and aggregation propensity. This translates to measurable improvements in bulk flow properties: **lower whole-blood viscosity** (reductions of 8-15% under low shear conditions) and **enhanced flow characteristics**, particularly in the microcirculation where capillary diameter approaches cellular dimensions.

Well-hydrated cells exhibit **greater deformability**, allowing them to squeeze through capillaries as narrow as **3–4 μm**, much smaller than their resting diameter of **7–8 μm**.

Clinical Implications:

Reduced viscosity means **decreased vascular resistance** and lower cardiac workload. Enhanced deformability enables more efficient transit through capillary networks, improving **oxygen diffusion capacity** across capillary beds.



The result is better tissue perfusion—particularly benefiting organs with high metabolic demands such as the brain, heart, kidneys, and exercising skeletal muscle. This optimization of microcirculatory dynamics contributes directly to improved cardiovascular efficiency and enhanced oxygen delivery to metabolically active tissues.

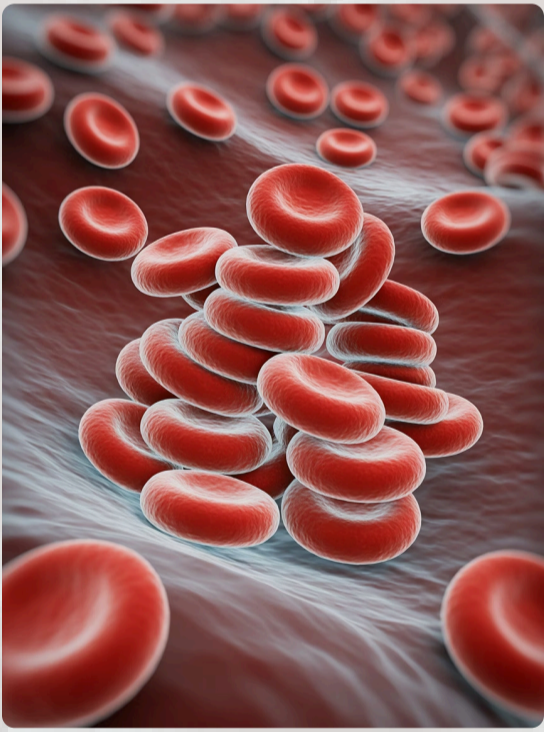
Prevention of Rouleaux Formation: Maintaining Optimal Blood Flow

Under pathological conditions—oxidative stress, inflammation, hyperglycemia, or altered plasma protein concentrations—red blood cells can form "**rouleaux**": stacked, coin-like aggregates resembling rolls of coins. This aggregation phenomenon significantly **impairs microcirculation by increasing blood viscosity, reducing effective capillary perfusion, and compromising oxygen delivery efficiency**.

The formation occurs when attractive forces (primarily from **fibrinogen and other acute-phase proteins**) overcome the normal **electrostatic repulsion** between cells. Healthy RBCs maintain a **negative surface charge** (zeta potential of approximately -15 to -20 mV) that prevents spontaneous aggregation.

MSW's Protective Mechanism

Magnetically structured water prevents rouleaux formation through multiple synergistic mechanisms. By maintaining **optimal cellular hydration**, MSW preserves the glycocalyx layer and surface charge density. The enhanced water structure stabilizes the cell's **negative zeta potential**, strengthening electrostatic repulsion between adjacent cells.



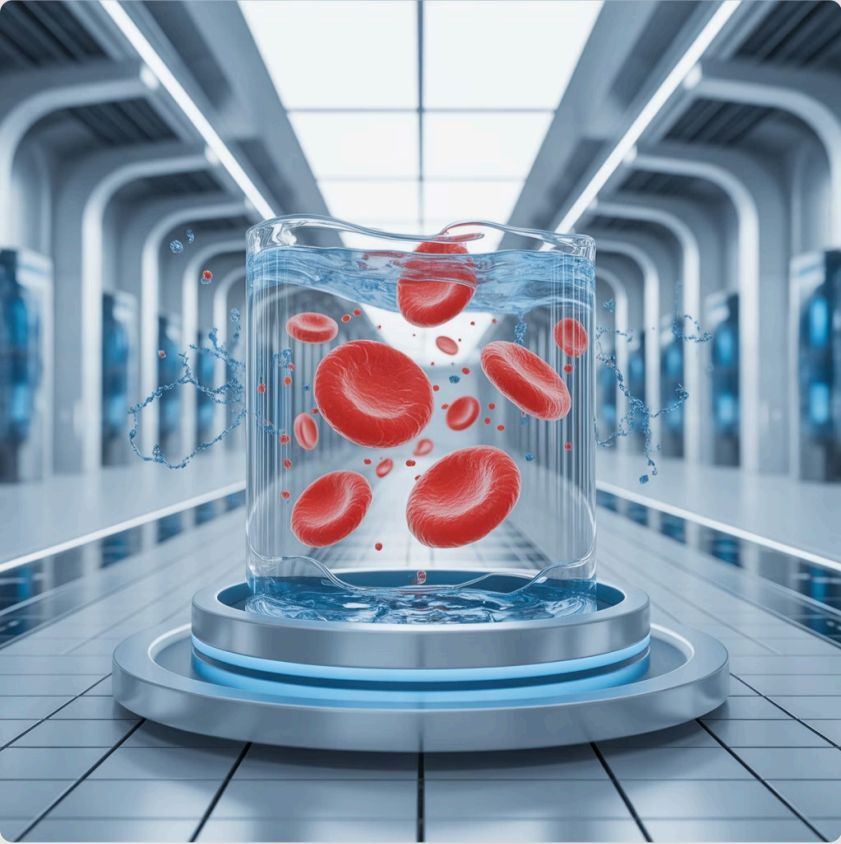
Preserving Cellular Integrity under Oxidative Stress


Magnetically structured water (MSW), through its balanced redox properties and optimized ionic environment, reduces oxidative modifications to membrane proteins and lipids that would otherwise promote red blood cell (RBC) aggregation. The resulting decrease in blood viscosity ensures that RBCs remain separate, flexible, and free-flowing—essential for smooth circulation through both large vessels and narrow capillaries, ultimately supporting efficient systemic oxygen transport and tissue perfusion.

Clinical Significance:

Beyond circulation mechanics, RBCs face relentless oxidative stress from continuous exposure to oxygen and iron-rich hemoglobin. This environment accelerates the generation of reactive oxygen species (ROS), which shorten cellular lifespan and compromise energy metabolism. MSW, with its enhanced redox potential and solvent dynamics, mitigates this burden by neutralizing free radicals and sustaining intracellular energy pathways.


By preserving adenosine triphosphate (ATP) production and extending erythrocyte viability toward their natural 120-day cycle, MSW ensures that red blood cells remain metabolically resilient. This longevity strengthens the circulatory system's overall performance, supporting sustained oxygen delivery and systemic vitality.






Membrane Protection

Shields lipids and proteins from free radical assault



ATP Sustainability

Maintains cellular energy production capacity



Extended Lifespan

Supports the full 120-day RBC lifecycle

Stabilized Ion Balance and Membrane Function

The Electrochemical Foundation

Enhanced hydration supports balanced **sodium, potassium, and calcium** exchange across the RBC membrane. These gradients, maintained by **ATP-dependent ion pumps (notably Na⁺/K⁺-ATPase)**, sustain the cell's electrical potential (around **−10 mV**) and create favorable conditions for **hemoglobin** to bind and release **oxygen** efficiently.

The result is improved **respiratory metabolism**, enhanced **tissue oxygenation**, and sustained **cellular vitality** across the body's approximately **'37 trillion cells'**.

Sodium–Potassium Balance

Na⁺/K⁺-ATPase pumps maintain critical concentration gradients

- 3 sodium ions expelled per cycle
- 2 potassium ions imported per cycle
- Sustained negative membrane potential

Calcium Regulation

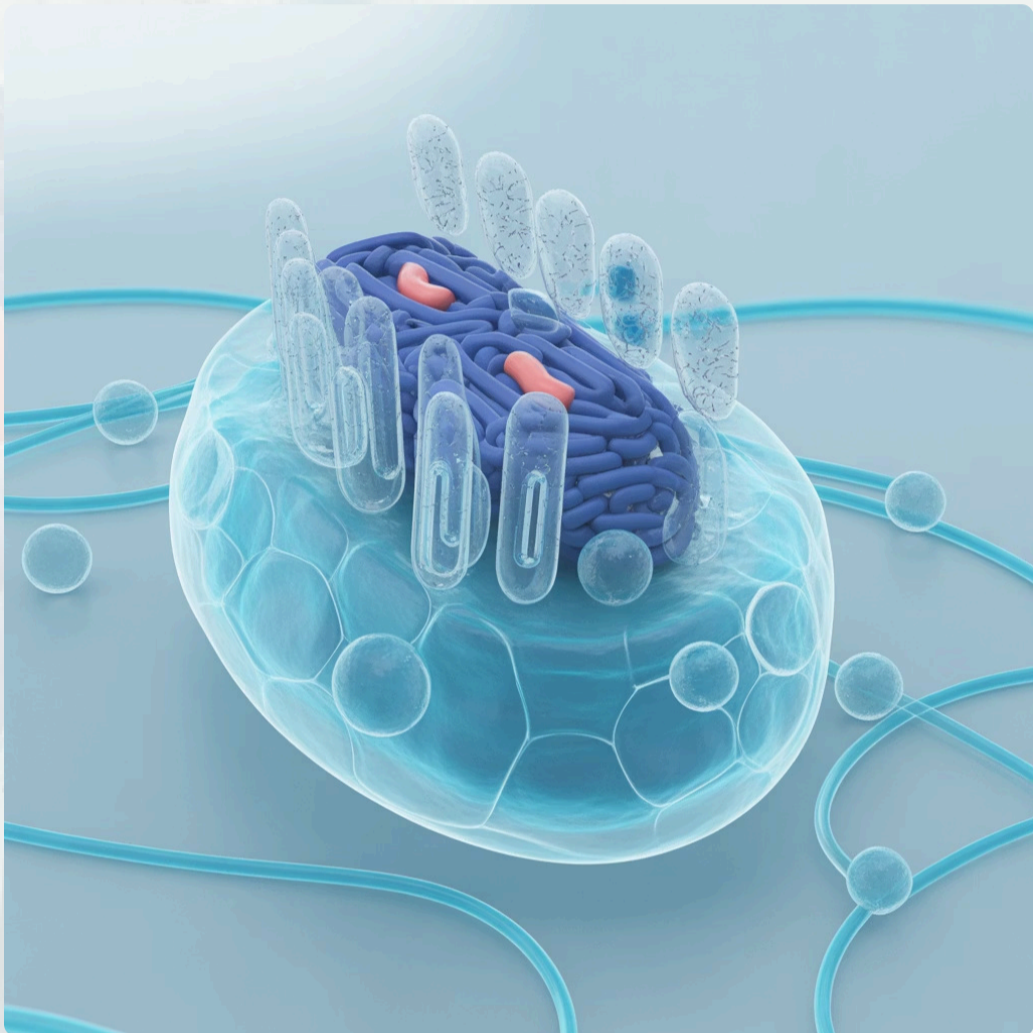
Precise calcium control enables optimal hemoglobin function

- Prevents premature cell aging
- Maintains membrane flexibility
- Supports oxygen binding dynamics

Electrical Potential

Membrane voltage creates ideal conditions for gas exchange

- Approximately −10 mV resting potential
- Facilitates hemoglobin conformational changes
- Optimizes oxygen loading and unloading



MSW : Electrochemical Harmony of Cellular Life

Magnetically Structured Water (MSW), through its enhanced ionic mobility and improved charge coherence, promotes **efficient ion exchange** and **membrane polarization stability**. This biochemical optimization sustains the activity of critical ion pumps while preserving the electrochemical gradients essential for multiple cellular processes—including glucose uptake, bicarbonate-chloride exchange (essential for CO₂ transport), and maintenance of cell volume.

The result is enhanced red cell vitality, improved ATP efficiency, and sustained gas exchange capacity throughout the cell's lifespan.

Water, Structure, and Charge Coherence

Magnetically Structured Water (MSW) enhances the hydration shells around ions, improving their mobility across membranes and within cytoplasm. This structured environment:

- Accelerates ion transport
- Stabilizes charge distribution
- Reduces ATP demand for pump activity

Outcome: Greater pump efficiency, preserved energy reserves and optimized red cell performance.

Sustained Gas Exchange & Cellular Longevity

By reinforcing electrochemical gradients, MSW supports:

- Glucose uptake
- Bicarbonate-chloride exchange (CO₂ transport)
- Cell volume regulation
- Hemoglobin conformational shifts for oxygen loading/unloading

The net effect: A more resilient, energy-efficient red cell—primed for oxygen delivery, carbon dioxide clearance, and long-haul cellular health.

Clinical Insight: Measurable Results

The science speaks for itself—magnetically structured water delivers documented improvements in circulatory health, detoxification capacity, and cellular vitality. Scientific research validates the transformative effects of magnetically structured water consumption.

Key Findings

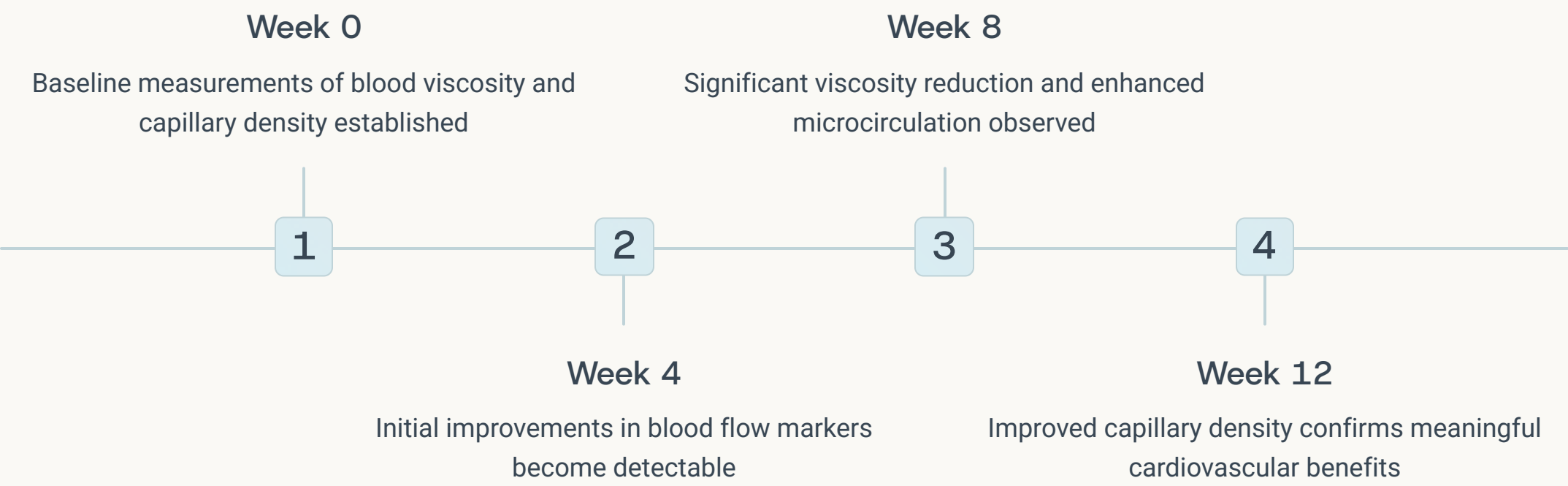
Clinical studies demonstrate significant improvements in cardiovascular health markers and microvascular function within a remarkably short timeframe, providing concrete evidence of MSW's physiological benefits

- **Reduced blood viscosity markers** indicating smoother, more efficient circulation
- **Improved capillary density** within 8-12 weeks of consistent MSW consumption
- **Enhanced microvascular function** suggesting better nutrient and oxygen delivery to tissues
- **Measurable cardiovascular benefits** that translate to real-world health improvements



"The improvements we observe in capillary density and blood flow dynamics represent meaningful physiological changes. These aren't just numbers—they translate to enhanced tissue oxygenation, better nutrient delivery, and improved overall cardiovascular health."

— Clinical Research Summary



Transform Your Hydration Today

The science is clear: magnetically structured water offers measurable benefits for human health across multiple physiological systems. From enhanced cellular hydration to improved cardiovascular function, from antioxidant protection to metabolic optimization—MSW represents the next evolution in functional hydration.

Whether you're an athlete seeking performance advantages, a health professional looking for evidence-based wellness tools, or simply someone committed to optimizing your health, magnetically structured water provides a foundation for enhanced vitality.



40%

Faster Cellular Uptake

Structured water passes through cell membranes significantly faster than conventional water

25%

ATP Production Boost

Enhanced mitochondrial efficiency increases energy production at the cellular level

100%

Natural Solution

No chemicals, additives, or artificial processing—just optimized molecular structure

In essence, **Magnetically Structured Water** is a functionally active medium that bridges **physics and biology**—working synergistically with the body to enhance **hydration dynamics**, **stabilize cellular energy systems**, and deliver measurable benefits across **multiple dimensions** of health and performance.

Drink Smart. Live Energized.

Experience the difference that intelligent hydration can make through magnetic restructuring of water.